

Fig. 2. 12-21.01.06. Amheida. Temple Hill.  
Conductivity survey. Contour interval 1 mS/m. scale 1:500

0 10 20 30 40 m

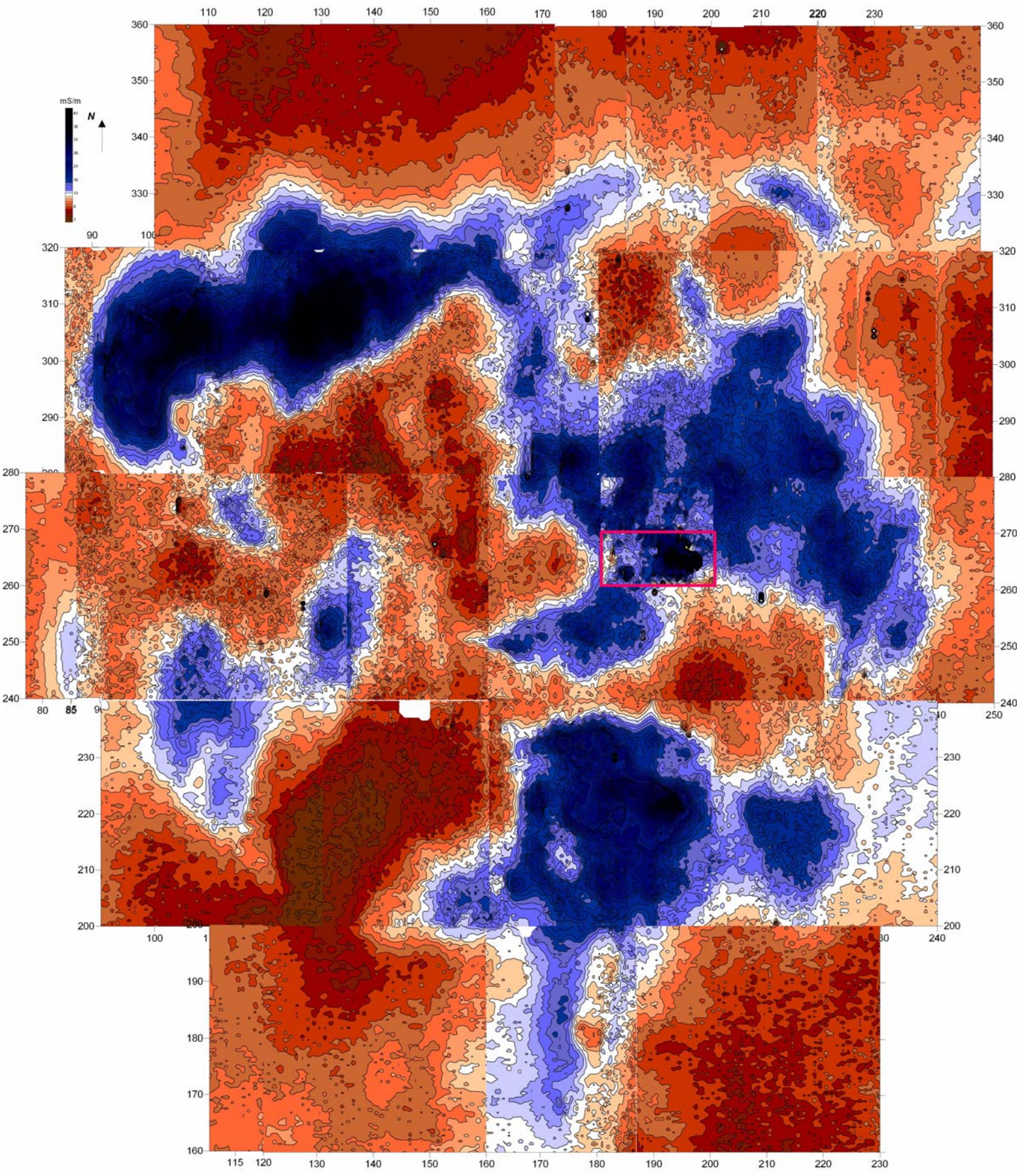


Fig. 3. 12-21.01.06. Amheida. Temple Hill.  
Electrical onductivity grey scale map. Scale 1:800

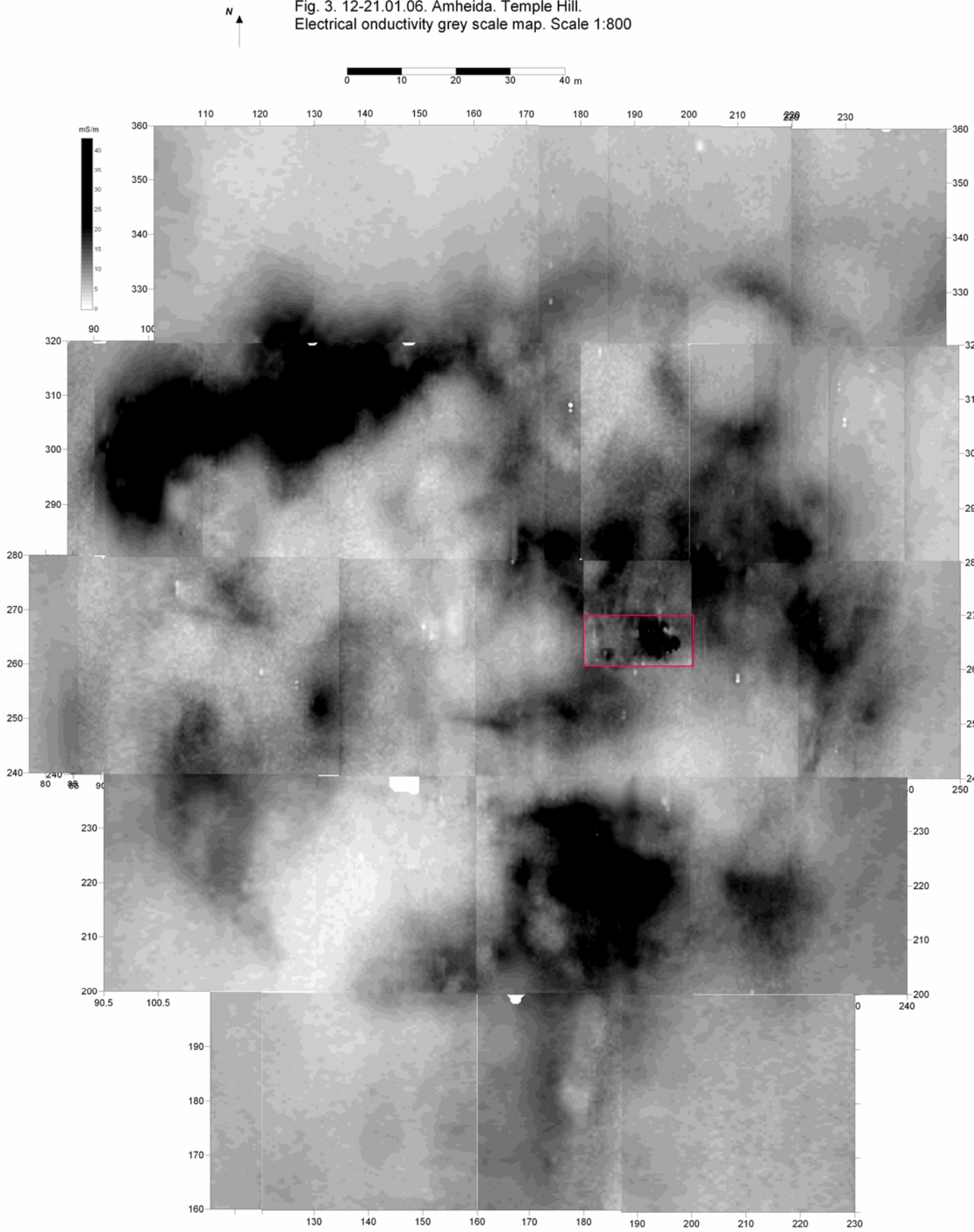


Fig. 4. 12-21.01.06. Amheida. Temple Hill.  
Conductivity survey. Contour interval 2 mS/m. scale 1:800

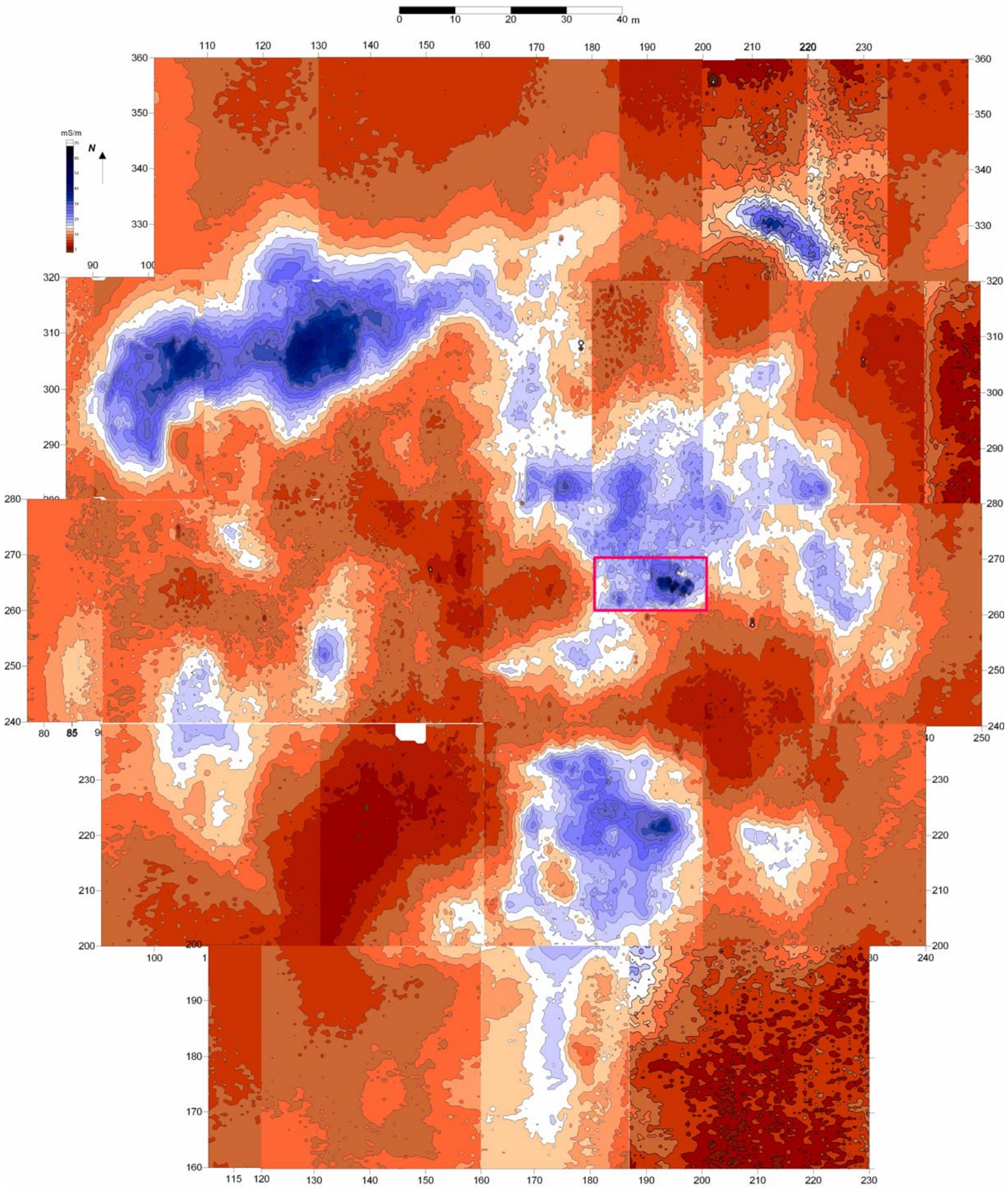




Figure 6. Amheida. Area A. Main or Temple hill.  
Magnetic map of 2000. Contour interval 2 nT.

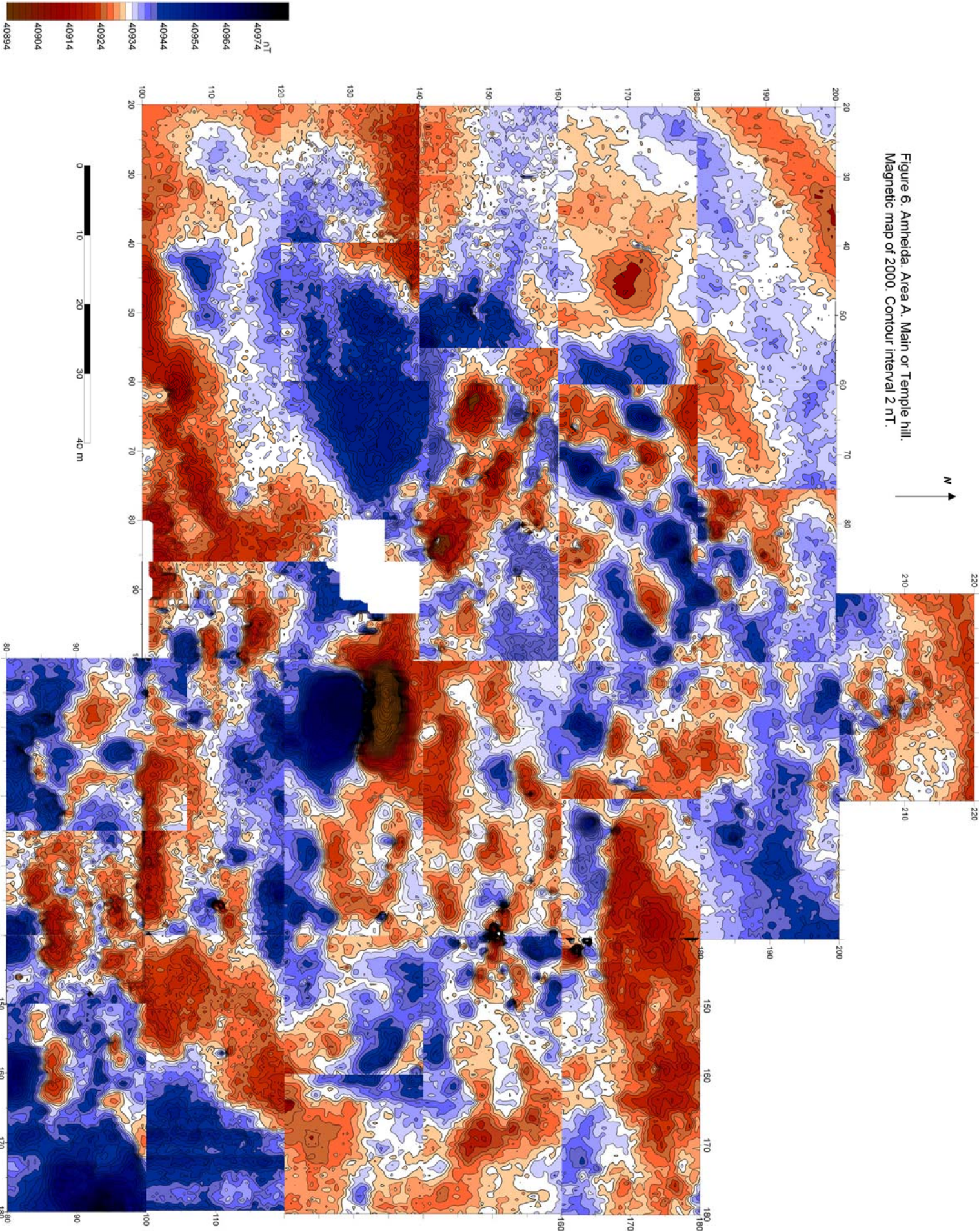
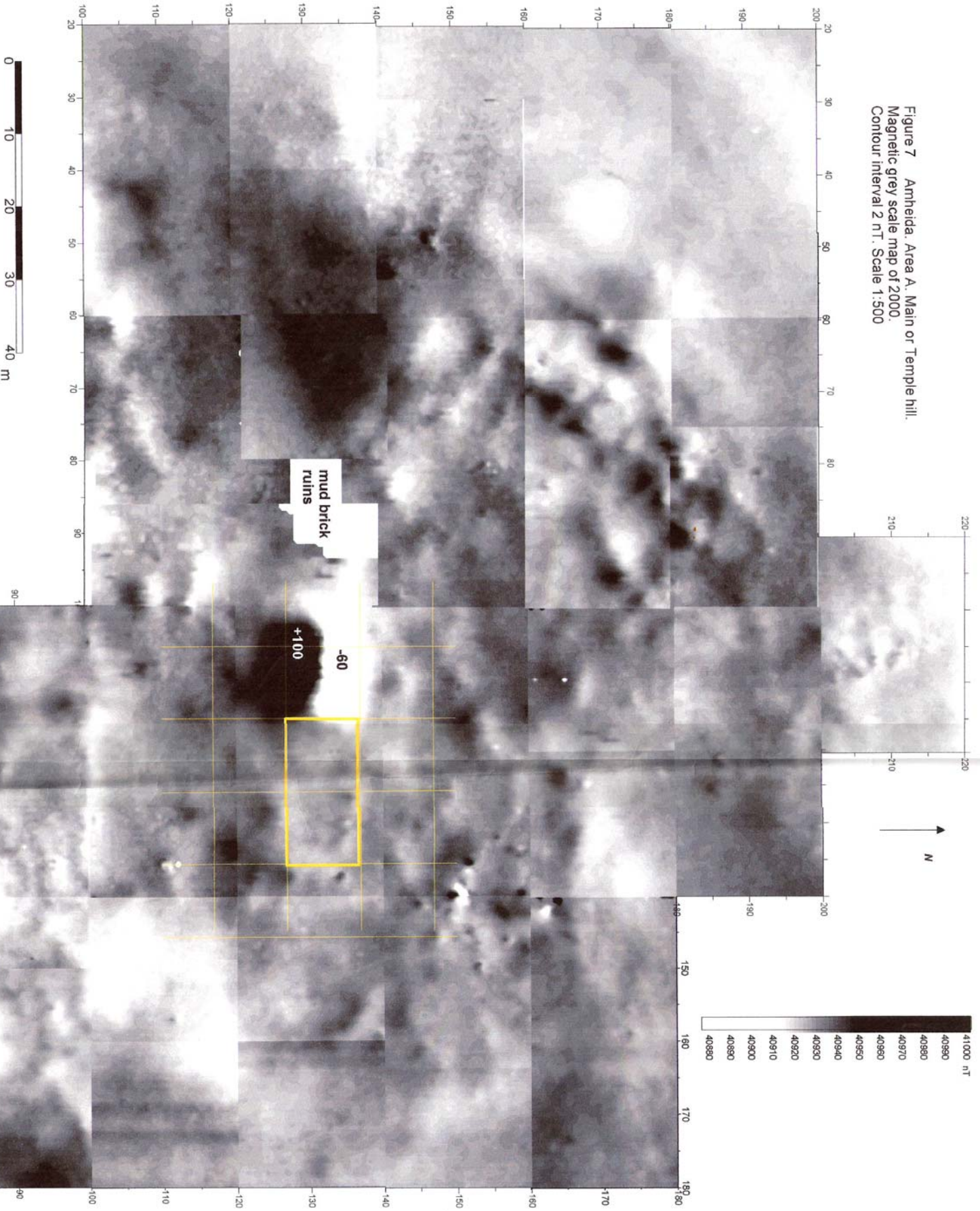


Figure 7 Amheida, Area A, Main or Temple hill.  
Magnetic grey scale map of 2000.  
Contour interval 2 nT. Scale 1:500



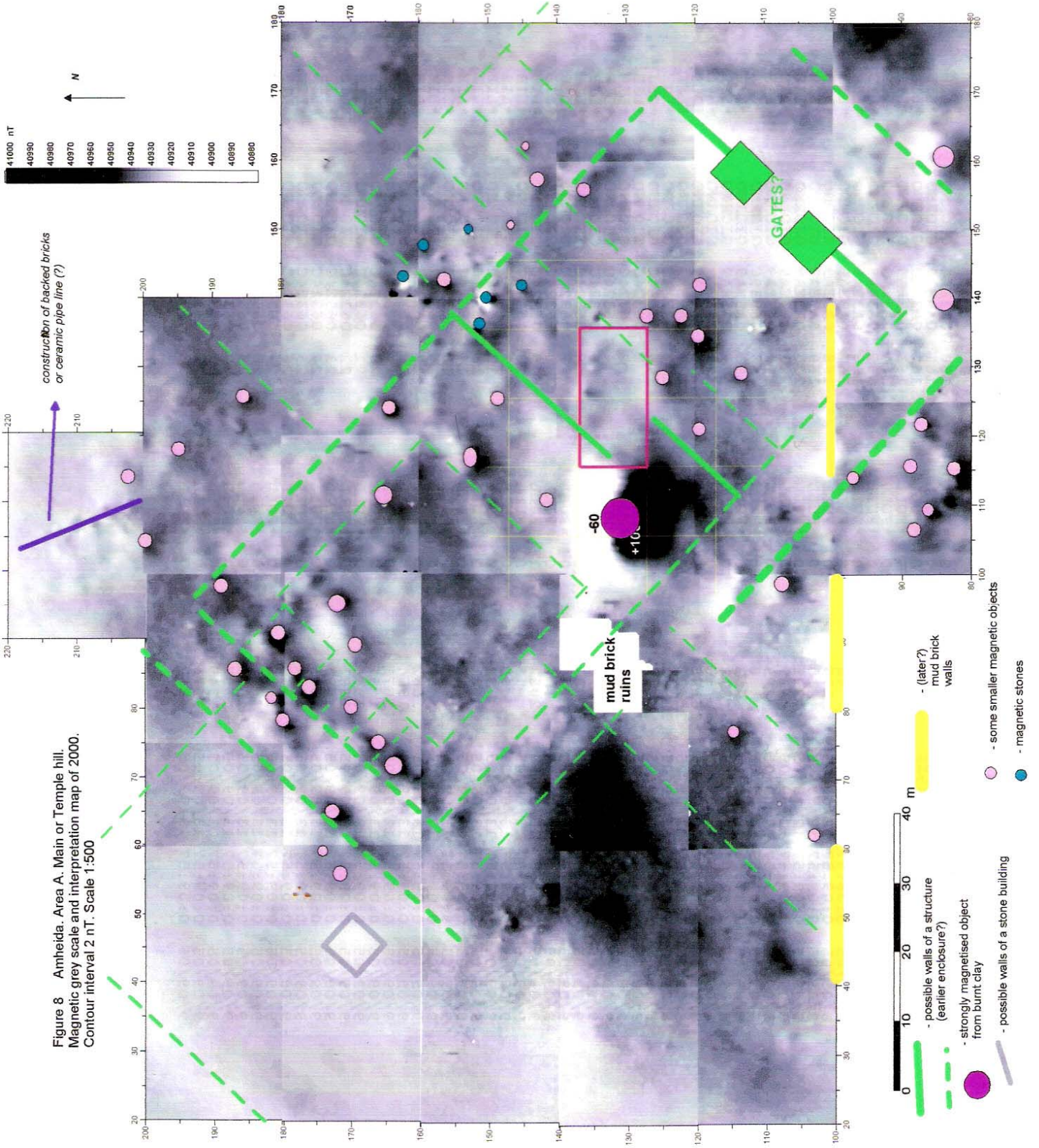


Figure 8 Amheida. Area A. Main or Temple hill.  
 Magnetic grey scale and interpretation map of 2000.  
 Contour interval 2 nT. Scale 1:500

- possible walls of a structure (earlier enclosure?)
- strongly magnetised object from burnt clay
- possible walls of a stone building
- (later?) mud brick walls
- some smaller magnetic objects
- magnetic stones



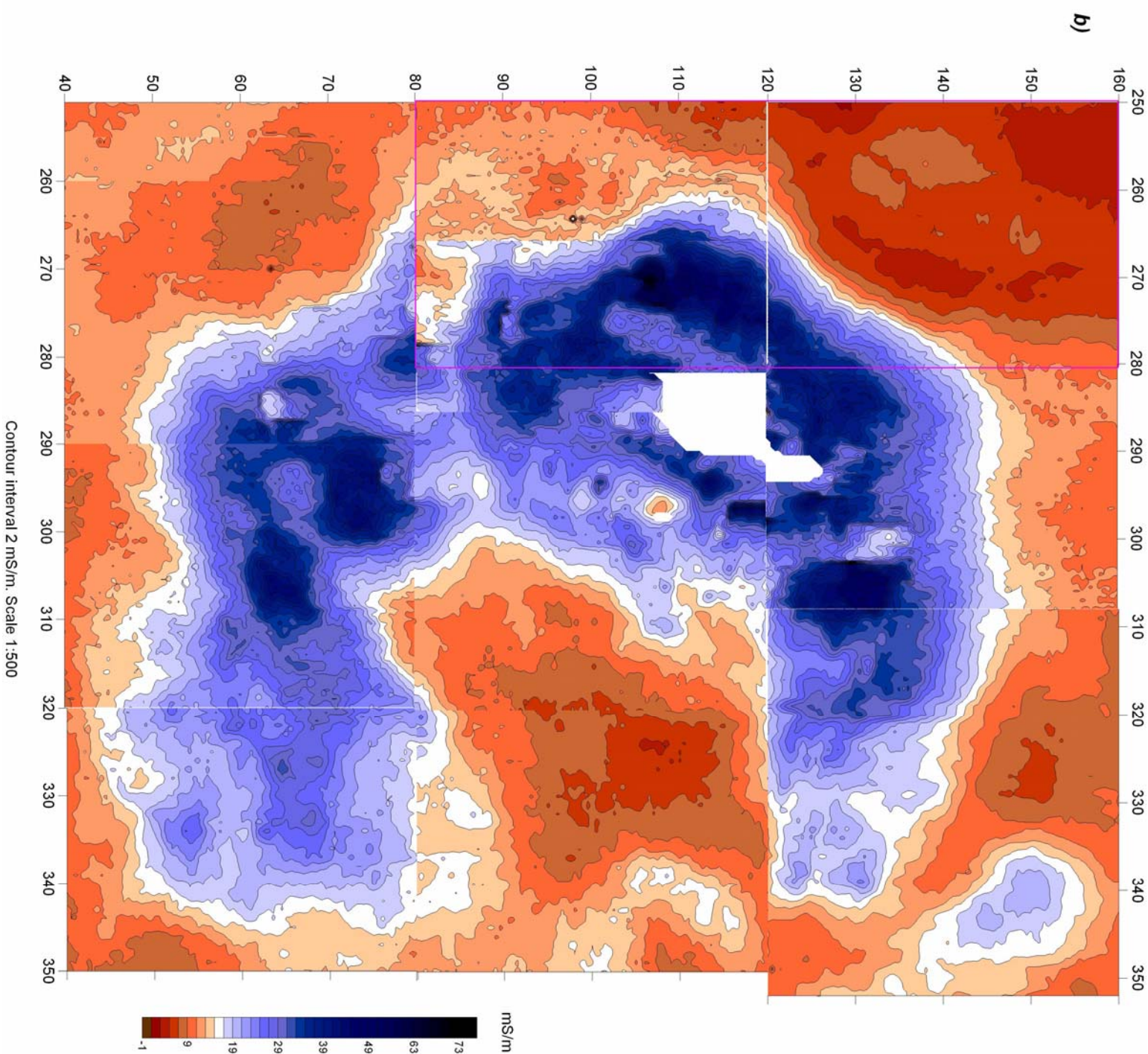
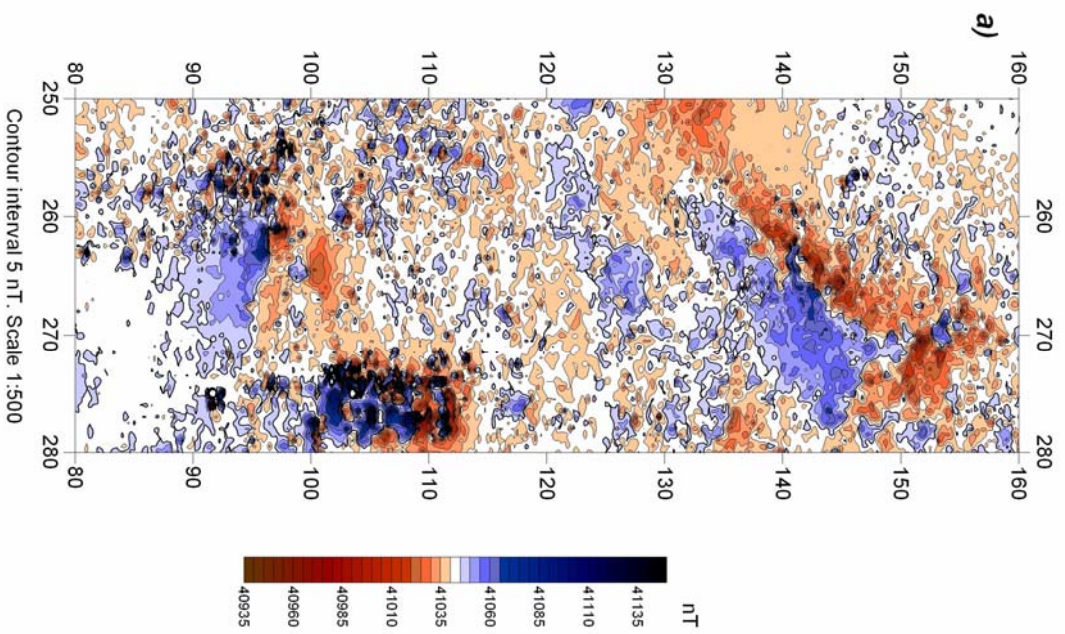


Fig. 9. Amheida. The Pyramid. Magnetic (a) and conductivity map (b).  
Scale 1:500

- contours of the magnetic map

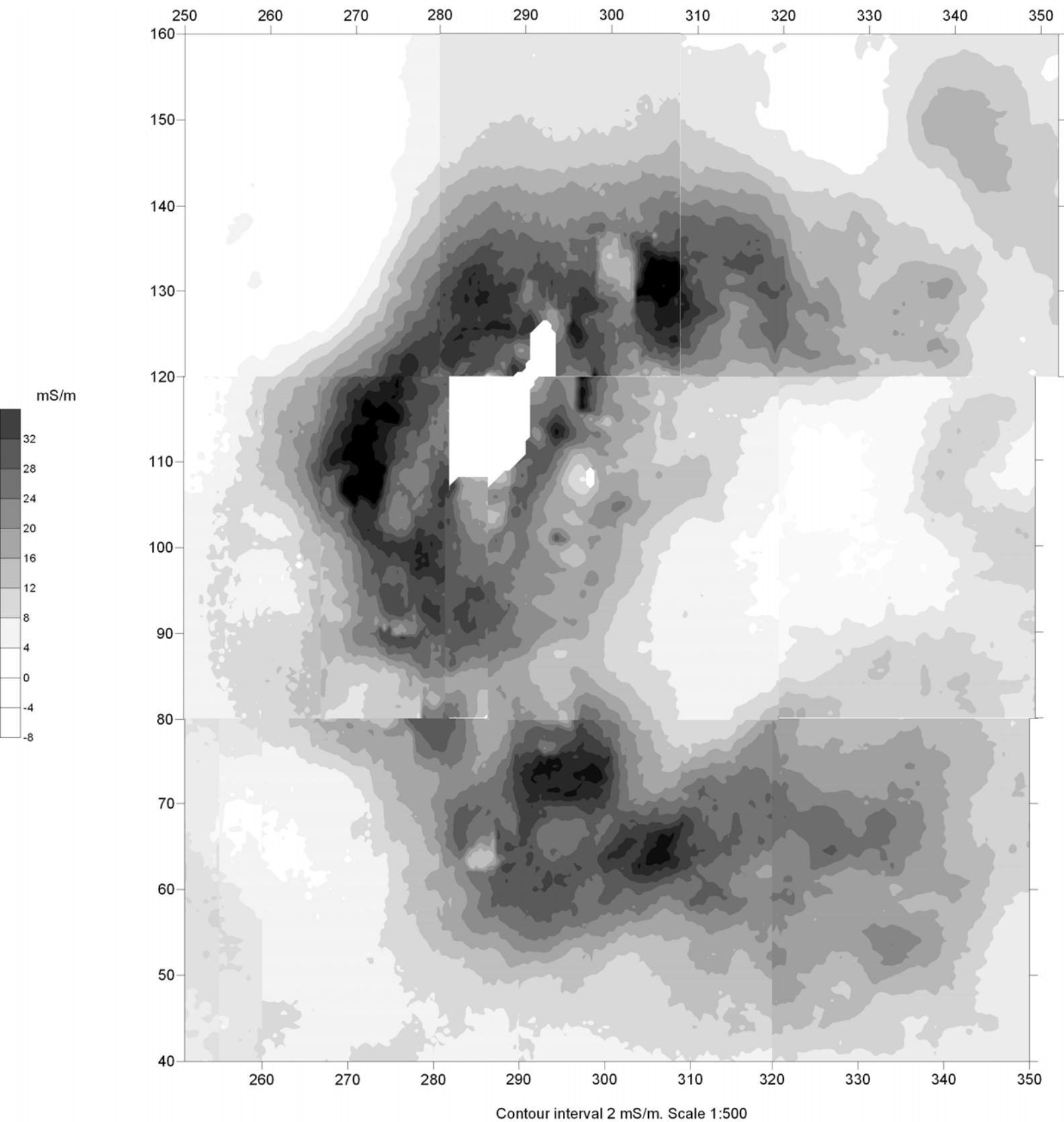


Fig. 10. Amheida. The Pyramid. Conductivity grey scale map.  
22-26.01.06. Scale 1:500

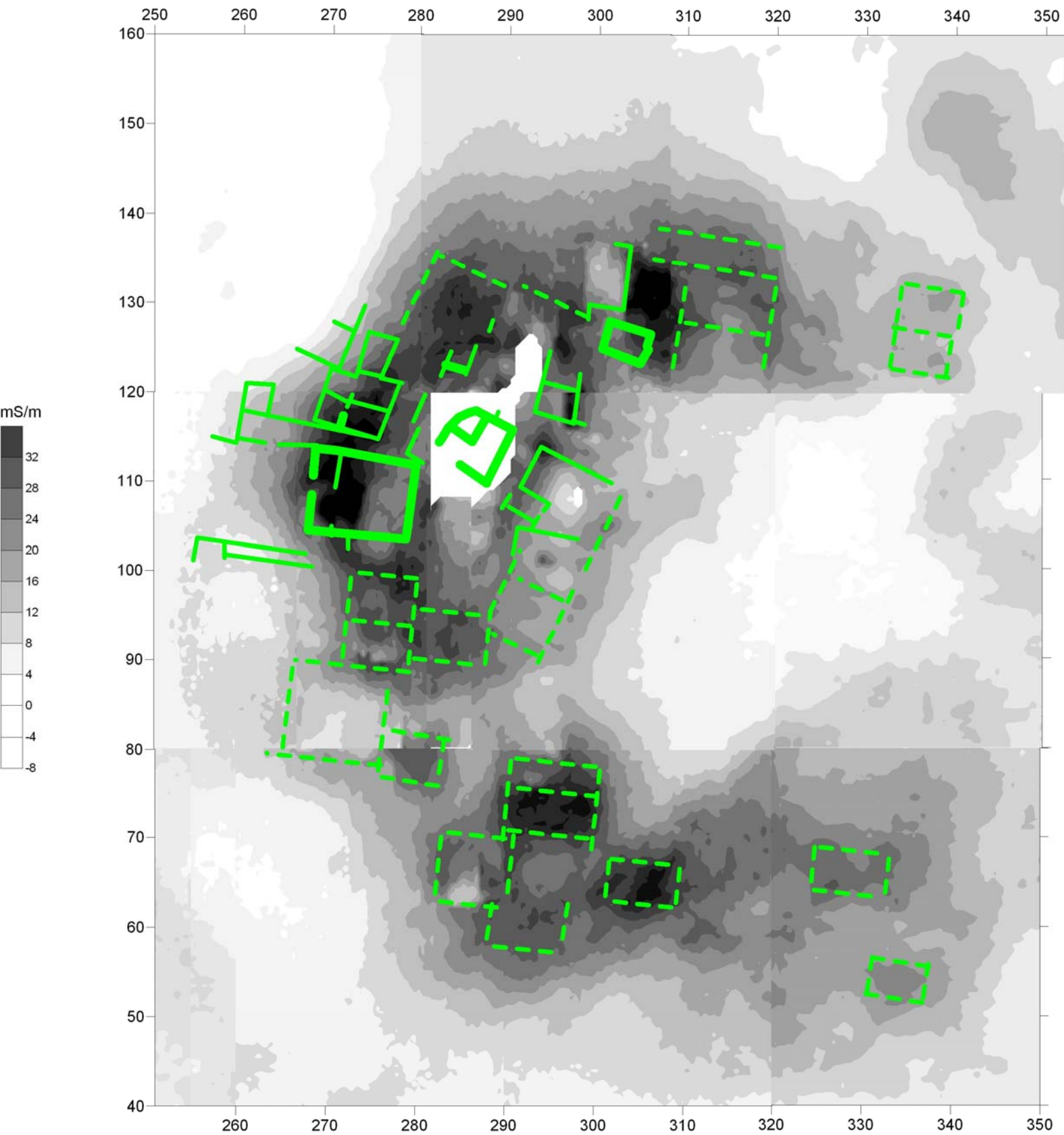


Fig. 11. Amheida. The Pyramid. Preliminary interpretation map.  
Scale 1:500

- - structures of mudbrick, visible on the surface
- - - - possible structures of 'conductive' mudbrick, visible on the conductivity map

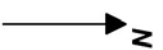
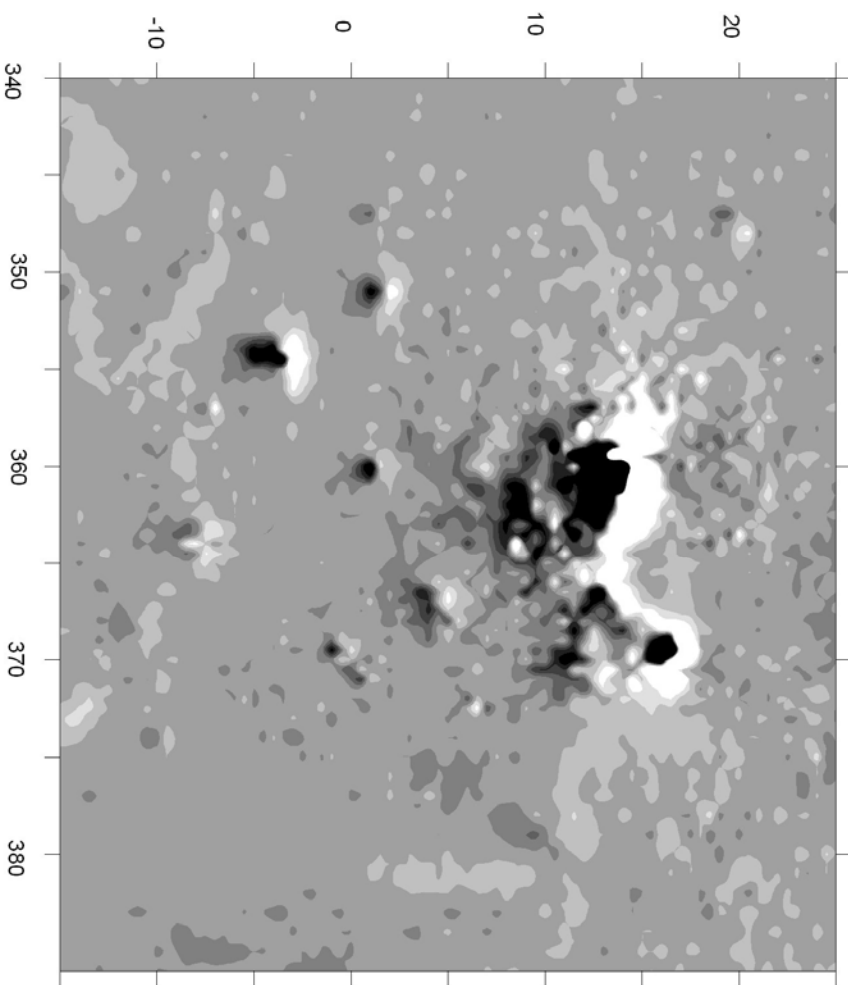
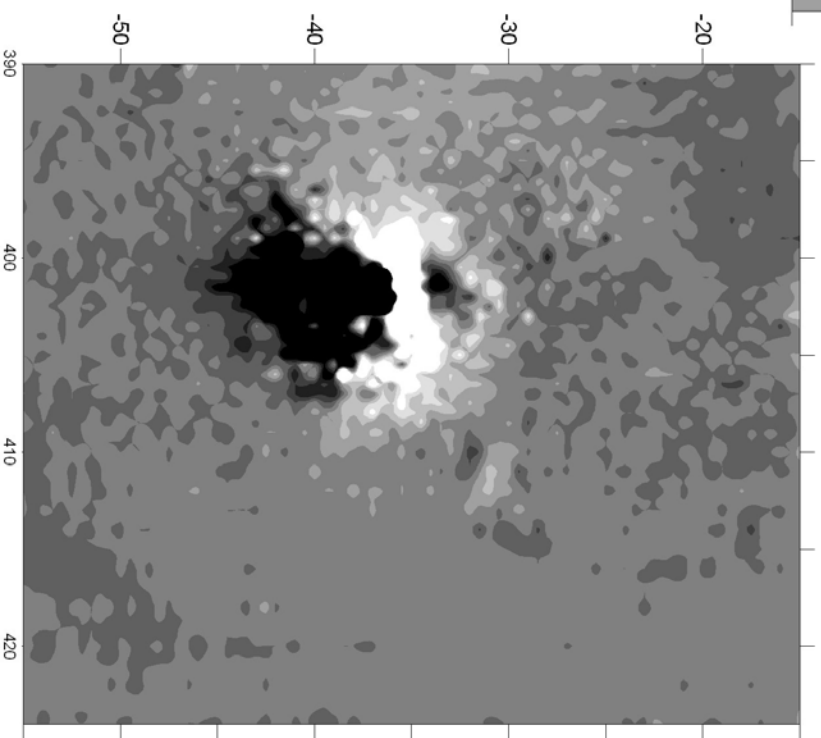


Fig. 12. Amheida. Potters Kilns 1 and 2 near the road.  
Magnetic grey scale maps. Scale 1:400



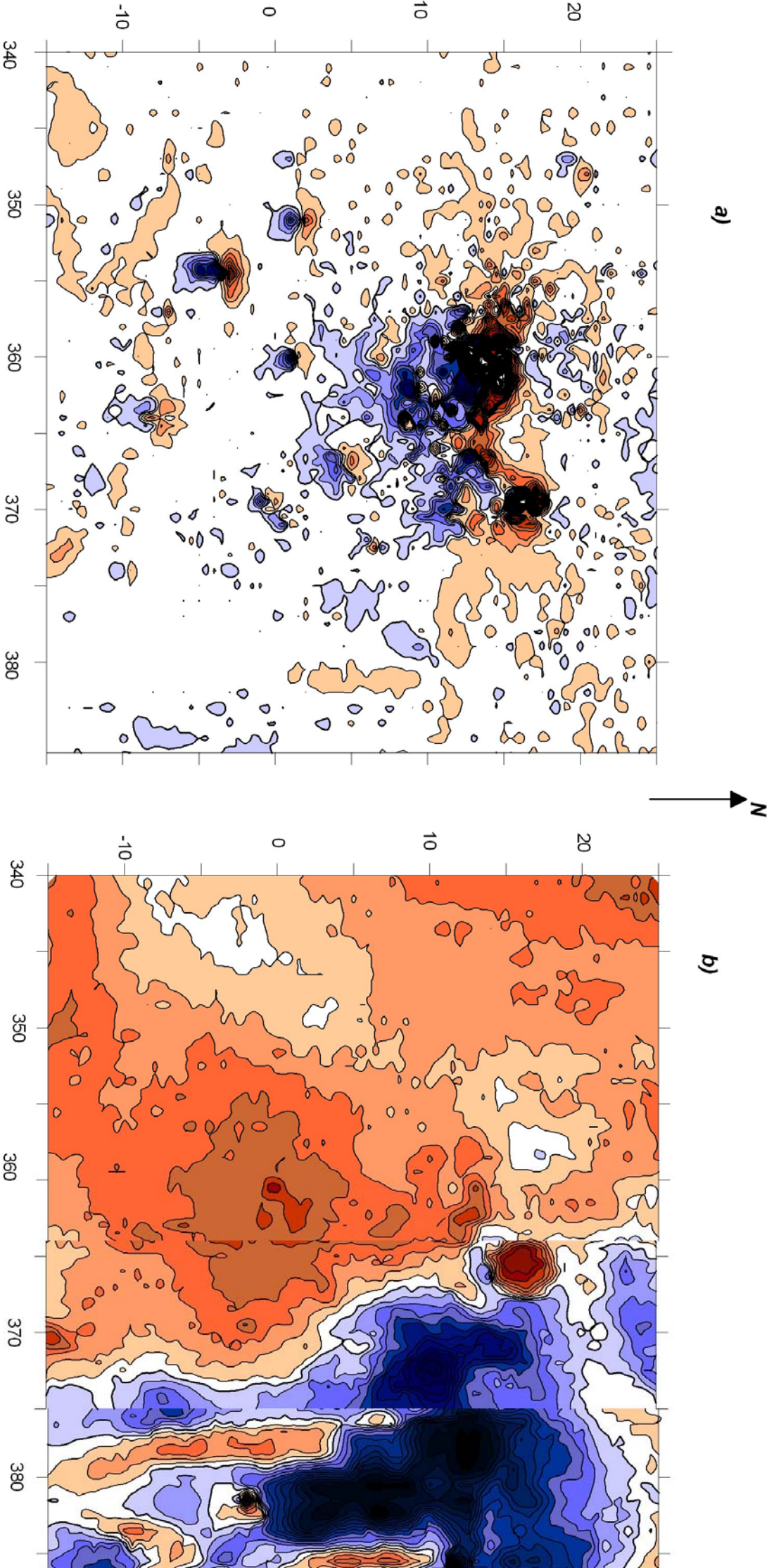


Fig. 13. Amheida. Pre-Roman (?) pottery kiln 1 near the road.  
Magnetic (a) and conductivity (b) color contour maps. Scale 1:400

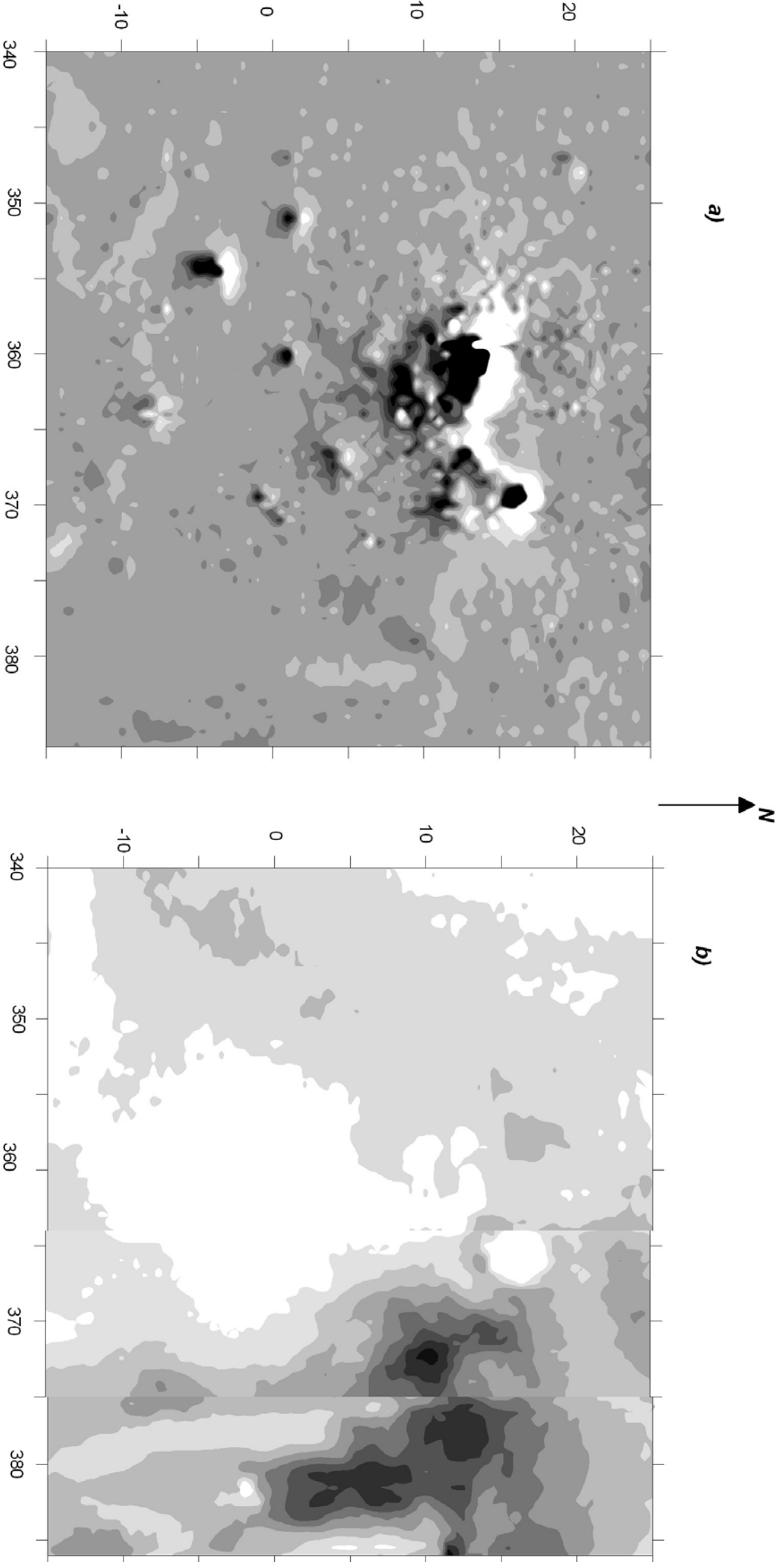


Fig. 14. Arnhemida. Pre-Roman (?) pottery kiln 1 near the road.  
Magnetic (a) and conductivity (b) grey scal maps. Scale 1:400

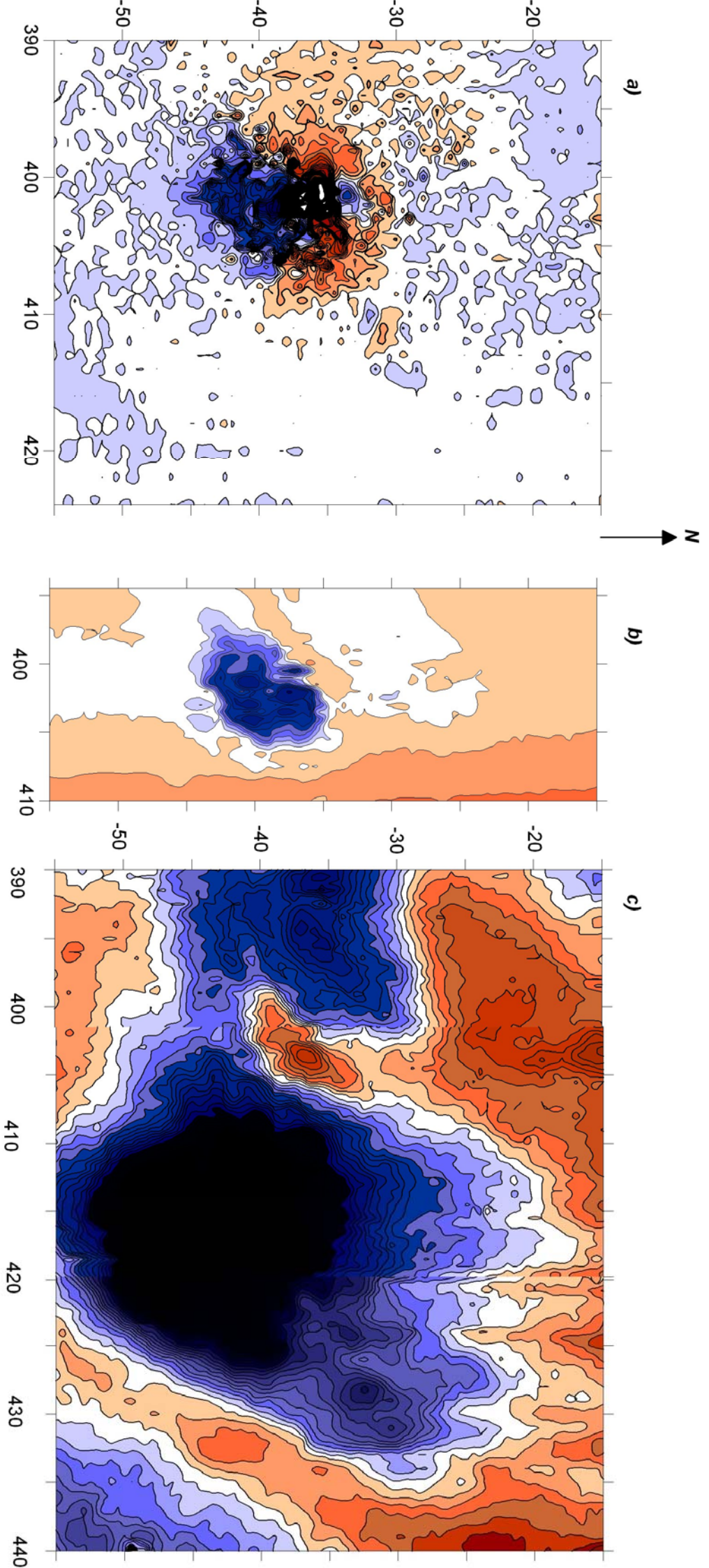


Fig. 15. Amheida. Pre-Roman (?) pottery kiln 2 near the road.  
 Magnetic (a), magnetic susceptibility (b) and conductivity (c) survey.  
 Scale 1:400

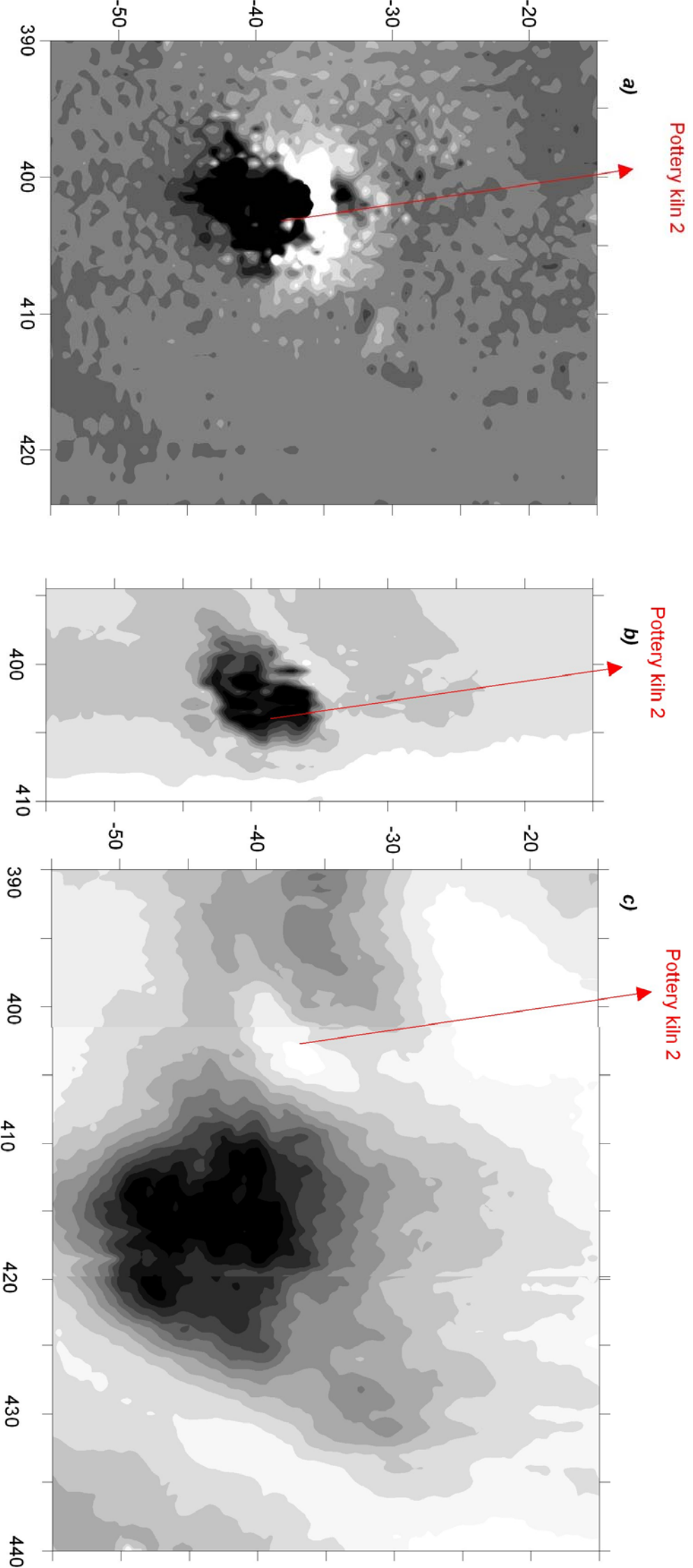
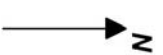
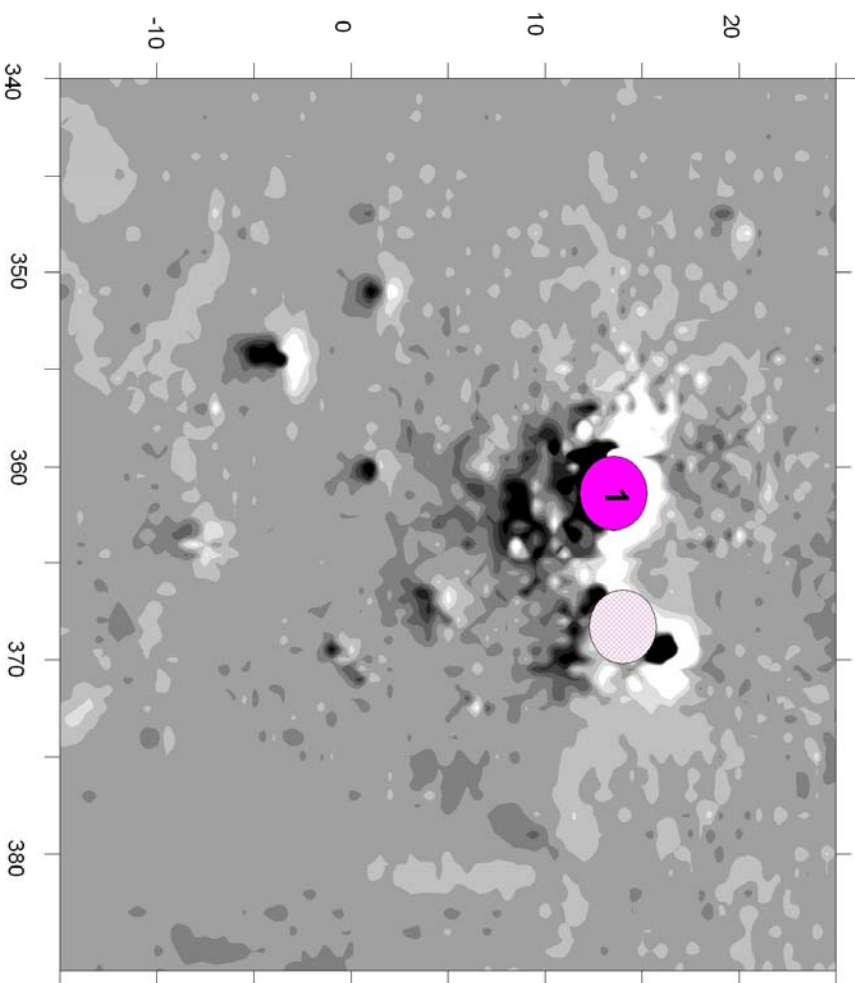


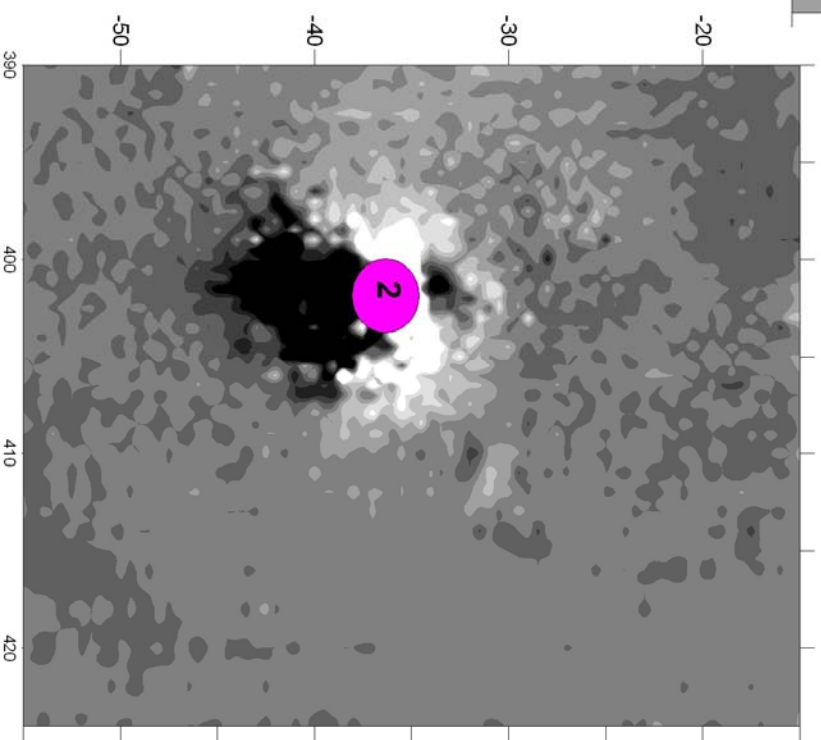
Fig. 16. Amheida. Pre-Roman (?) pottery kiln 2 near the road.  
Magnetic (a), magnetic susceptibility (b) and conductivity (c) grey scale maps.  
Scale 1:400





- pottery kilns 1 and 2
- destroyed (?) pottery kiln 3 (?)

Fig. 17. Amheida. Pottery kilns 1 and 2 near the road. Magnetic and interpretation grey scal map. Scale 1:400



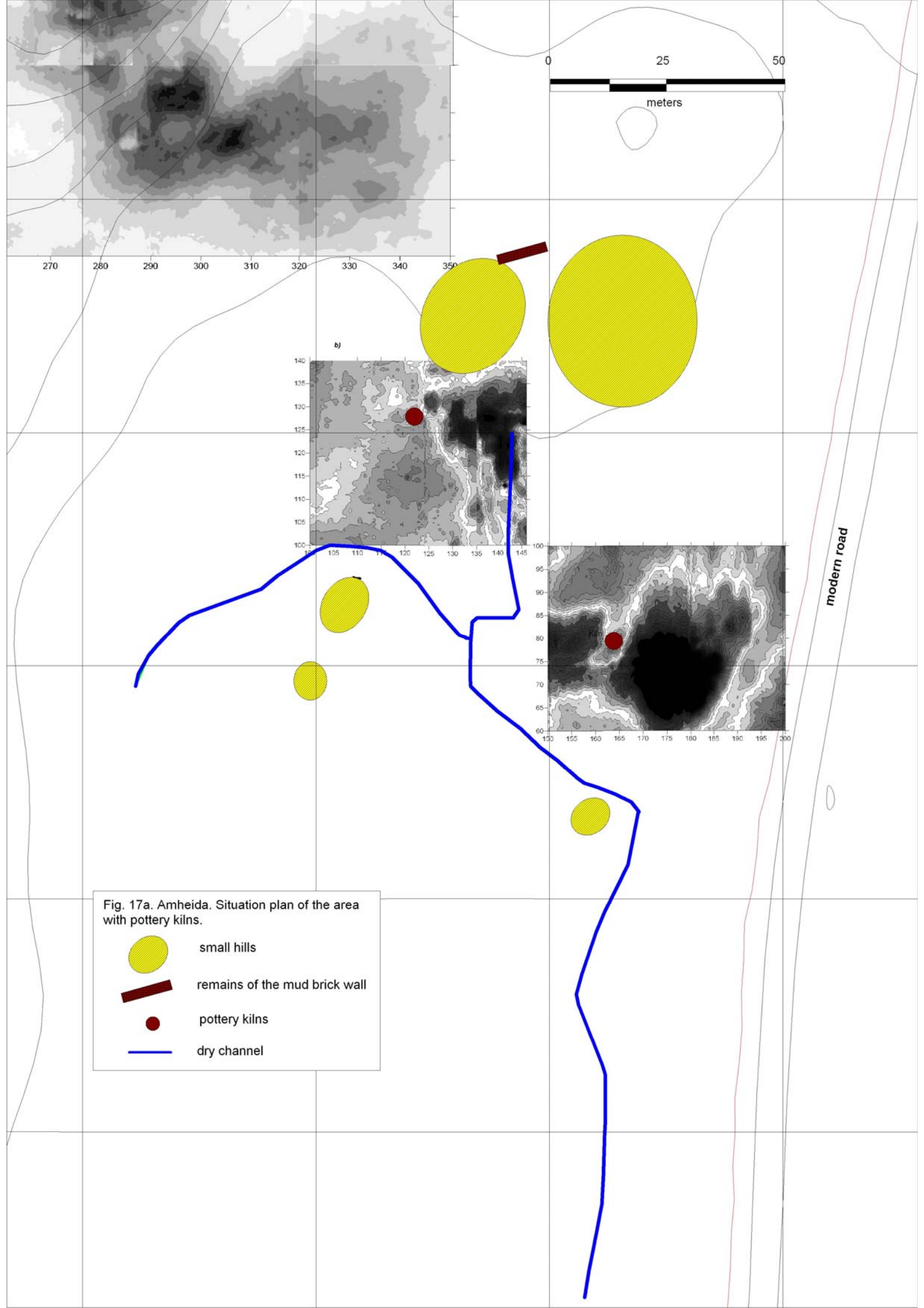




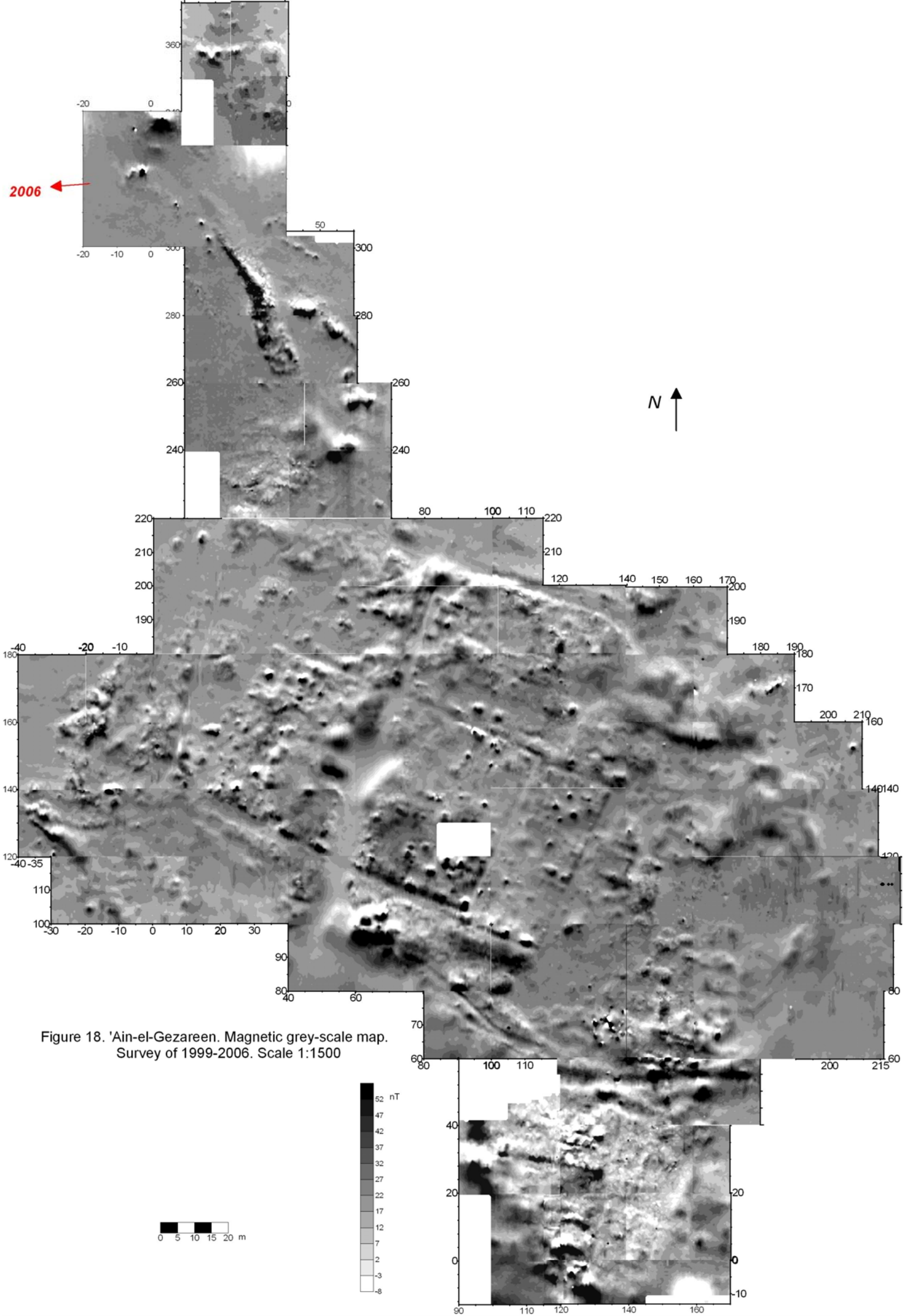


Fig. 17a. Amheida. Situation plan of the area with pottery kilns.

-  small hills
-  remains of the mud brick wall
-  pottery kilns
-  dry channel



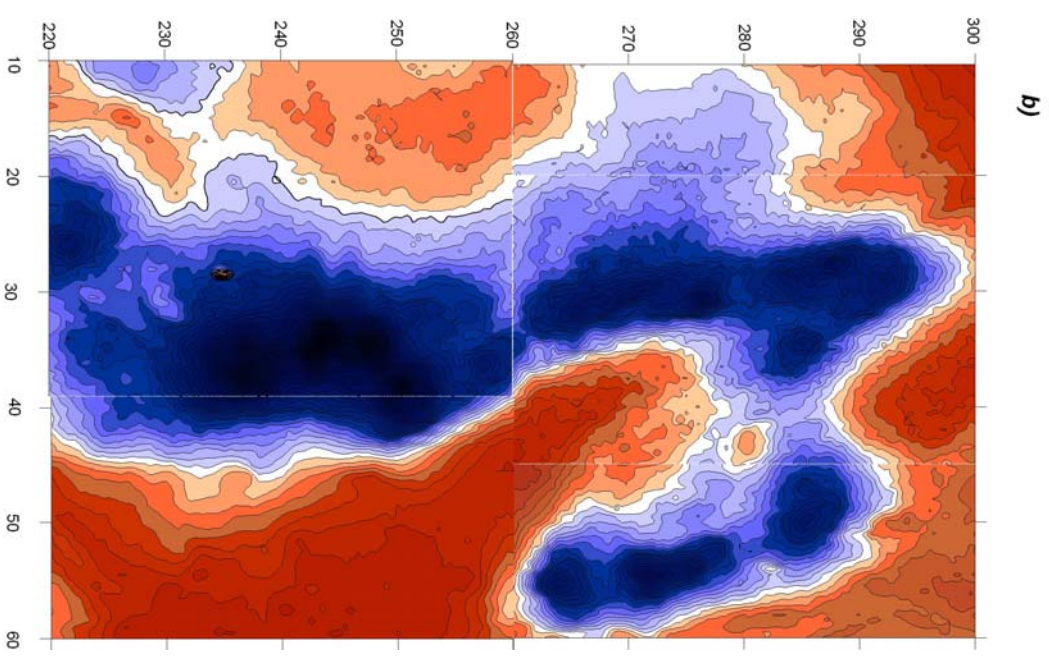
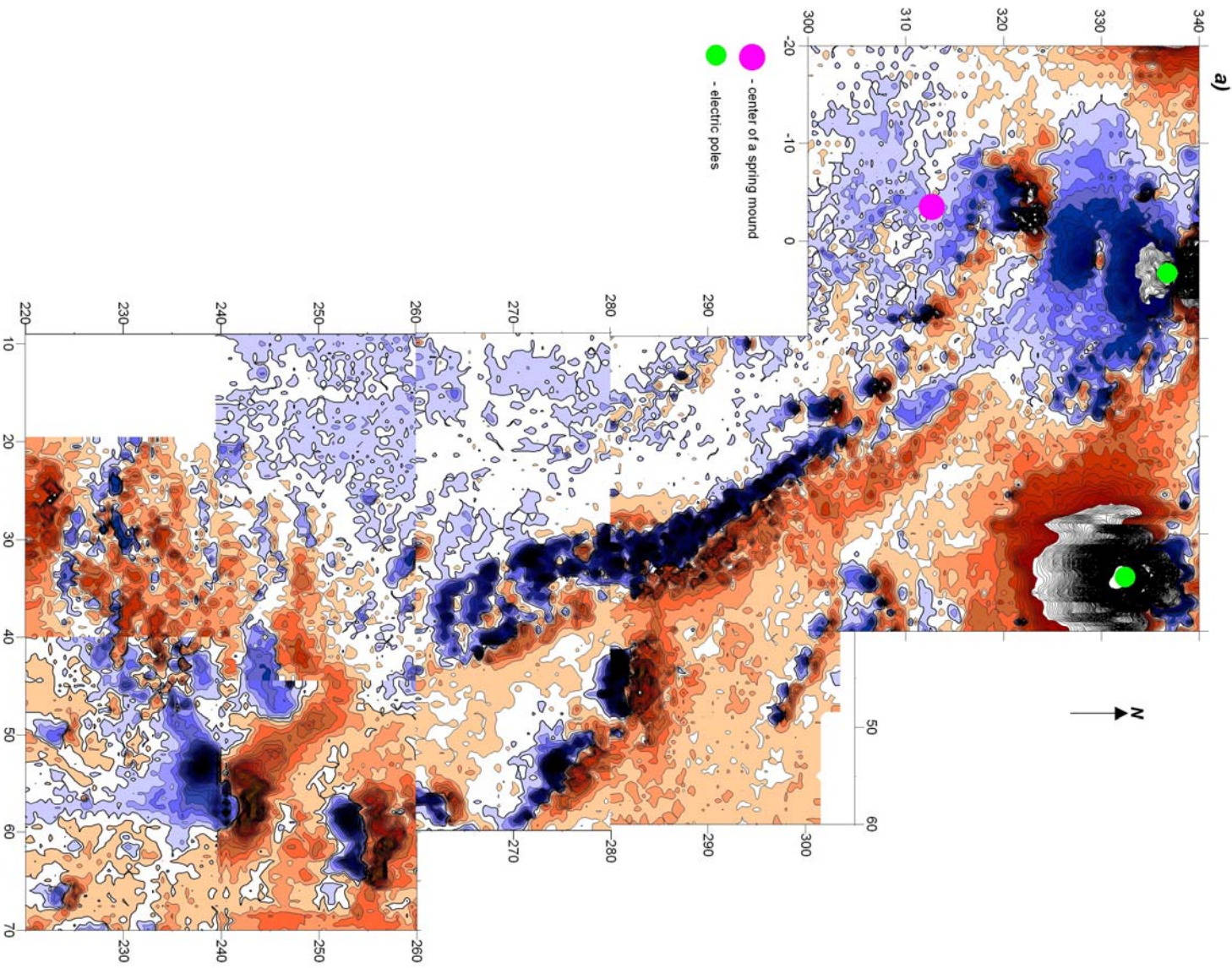


Fig. 19. Ain el-Gezazreen. Survey of 28.01.06 and 31.01.06.  
 Magnetic (a) and conductivity (b) survey.  
 Scale 1:500

